

STIEBEL ELTRON

DEM 6 & WSH 20

Touch free endless handwashing
for a stylish hygiene solution.



DEM 6 and WSH 20

SINGLE PHASE ELECTRIC INSTANTANEOUS

Touch free endless handwashing

Wherever smaller volumes of warm water are frequently required, the mini electronic instantaneous water heater DEM 6 is the perfect choice. Sold with a chrome sensor tap, the STIEBEL ELTRON DEM 6 + WSH is a package which goes well with any interior. Sensor taps provide the best solution to hygiene as your hands do not need to come into contact with the tap. This is particularly important in shared bathrooms, where users are exposed to germs from other users.

Product features

- › Sold packaged with battery-operated chrome sensor tap (WSH 20 AU)
- › Temperature delivery up to a maximum of 50 °C in accordance with AS3498
- › Designed for supplying a single hand basin
- › No flue, ventilation or safe tray required
- › No standby or distribution losses
- › Water heater made in Germany

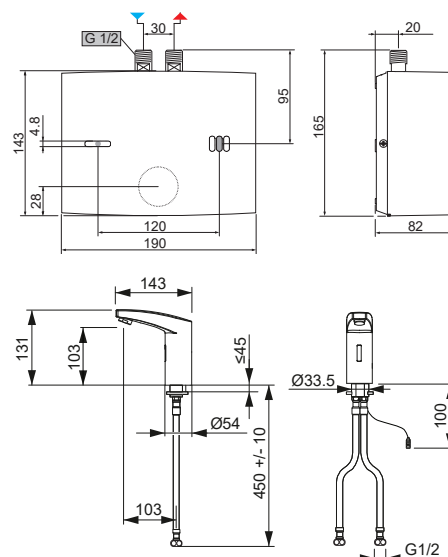
Type	DEM 6 AU
Article no.	201683
Rated output (240 V)	kW 6.2
Rated current (240 V)	A 25.8
Connection	1/N/PE
Fuse protection (240 V)	A 32
Electrical installation	As per AS/NZS3000
Installation requirements	AS/NZS3500.4.2 & local requirements
Switch on flow rate	L/min 2.2
Max. temperature	°C 50
Water connection	G 1/2
Max. permissible pressure	kPa 1000
IP rating	IP25
Height	mm 143
Width	mm 190
Depth	mm 82
Weight	kg 1.7
Colour	White
Approvals	WaterMark Lic No. WMKA00301. AS3498

Temperature Rise (240 V)	DEM 6 AU
2.5 L/min	+35°C
3 L/min	+29°C
4 L/min	+22°C
5 L/min	+17°C
6 L/min	+14°C

The DEM 6 AU electric instantaneous single phase water heater delivers hot water not exceeding 50 °C in accordance with AS3498. Refer to AS/NZS3500.4, local requirements and installation instructions to determine if additional delivery temperature control is required.



Dimensions



Calculating Output Water Temperature

Add the temperature rise values to your incoming cold water temperature to calculate output at a desired flow rate.

Seasonal Average Cold Water Temperatures

Melbourne: 15 °C
 Sydney/Brisbane/Perth/Adelaide: 18 °C
 Canberra/Hobart: 14 °C
 Townsville/Darwin: 25 °C

